

# News

## Web Tools For Delphi

HRef Tools Corp have produced a set of Delphi components for publishing on the World Wide Web, which are available now in 'early experience' form.

Michael Ax, who's been heavily involved in the development, is really excited about them and commented "setting up a webserver...it's totally easy". To find out more, visit <http://www.href.com> or email Ann Lynworth at [ann@href.com](mailto:ann@href.com)

## B-Tree Filer

TurboPower (Colorado, USA) are hard at work on a Delphi version of their B-Tree Filer database toolbox, which will provide a component interface which makes the package act as a datasource for Delphi's data-aware components. Other features will include multi-step transaction management, untyped keys and data dictionary support. Compared with the BDE, both enhanced performance and a small footprint (memory and disk) are features which can be anticipated.

No news on release dates yet, but TurboPower are on +1 (719) 260 9136, or try their new Web site at <http://www.tpower.com>

## Training In Italy

Marco Cantu, author of *Mastering Delphi* offers training Delphi courses in Italy. Email him at [100273.2610@compuserve.com](mailto:100273.2610@compuserve.com) for details.

## Graphics Server

Bits Per Second of Brighton, UK, now have version 4.04 of their Graphics Server graphing toolkit available.

The great news is that it now includes native Delphi components! The user interface is now improved and new features are included. They are already working on a 32-bit version for Delphi 2.0. We plan to review both Graphics Server and DFL's LightLib Business (see below) shortly. Contact Bits Per Second on +44 (0)1273 727119,

Fax: +44 (0)1273 731925, Email: [rflowers@bits.mhs.compuserve.com](mailto:rflowers@bits.mhs.compuserve.com)

## LightLib Business

DFL of Toronto, Canada, also have a new component-based graphing kit just released: LightLib Business, which DFL claim is extremely easy to use. Contact DFL at +1 (416) 789 2223, Fax: +1 (416) 789 0204, or visit <http://www.dfl.com>

## BSS Application Framework

Following the launch of Business Systems (News, Issue 4), Business Software Systems (BSS) have now released Application Framework which aims to make Delphi development even easier and quicker. Call them on +1 (703) 503 5600, Fax: +1 (703) 503 7901, Email: [76652.2065@compuserve.com](mailto:76652.2065@compuserve.com) (nb: the Email address given in Issue 4 was incorrect).

## Enigma Plus

GeoMEM software in Blairgowrie, Scotland, are now distributors for the Delphi Enigma Plus Geographic Information System (GIS) compo-

nent, which they claim is the most powerful Windows-based GIS development tool available. The costs are low, too, at £295 for the component plus a £95 run-time licence per application.

Features include: linear and polygonal topology, 3D-rendering, walk-throughs, virtual reality, vector or raster overlays, import and export to common GIS and CAD formats. Call GeoMEM on +44 (0)1250 872284, Fax: +44 (0)1250 873290, Email: [sales@geomem.win-uk.net](mailto:sales@geomem.win-uk.net)

## Shareware Wrapper

Open Windows of Colorado, USA, have released a Delphi source code package called OWShare, which allows shareware developers to wrap their products in all the necessary intro screens, nag screens and limited time controls which help to ensure users actually register the fruits of your labours!

The functionality is compliant with the latest Association of Shareware Professionals (ASP) recommendations. For details call

➤ **The Delphi Magazine is on the World Wide Web!** Make sure you visit our new Web page soon, which we aim to keep regularly updated with news of what's going to be in the next issue, tips, links to other Delphi sites, back issue details and more. We're at: <http://ourworld.compuserve.com/homepages/DelphiMagazine>

Document Title: The Delphi Magazine  
Document URL: <http://ourworld.compuserve.com/homepages/DelphiMagazine>

Get expert help on all your Delphi projects with...

**THE Delphi M.A.G.A.Z.I.N.E**

Published monthly, each issue of The Delphi Magazine is packed with ideas to help you get the most out of Delphi; the development tool from Borland which has taken the world by storm!

Each issue includes a free disk containing all the source code for that issue, plus the best of the most recent shareware and freeware components and tools. Our goal is to cater especially for the professional Delphi developer, so we aim to have a good selection of solid technical articles which you will want to keep referring back to over the months to come.

Our team of authors includes some of the most experienced and knowledgeable Delphi developers in the world. Subscribers from more than 35 countries are already enjoying The Delphi Magazine, why not join them?

Want to know more? Of course you do! Select one of these options:

- [What's in the next issue...](#)
- [Regular columns...](#)
- [Back issue contents...](#)
- [Delphi tips...](#)
- [Files to download...](#)
- [UK readers: special CD-ROM offer...](#)
- [How to subscribe... \(NEW! US Delphi users can now subscribe in US\\$ through our US Agent!\)](#)

+1 (719) 531 0403, Email Dick Bryant 75236.3243@compuserve.com or perhaps visit <http://delta.com/openwin.com/openwin.htm>

### HyperTerp

HyperAct (Indiana, USA) have produced a clever Delphi component called HyperTerp which adds a Pascal-like script language to your application with the minimum of hassle. For details call or Fax +1 (319) 351 8413, send Email to: rhalevi@hyperact.com or visit <http://www.hyperact.com>

### VB To Delphi Translator

A new Visual Basic to Delphi translator, VB2D, is available from Eagle Research of California, USA. It handles variants, control and form arrays, redimensionable arrays, precedence adjustments, gotos and gosubs, VBx's and most of the intrinsic VB functions.

The screenshot (right) shows the interface and translation rates of 90% to 100% are claimed by the developers. For details call: +1 (415) 495 3136, Fax: +1 415 3638.

### PostCode Plus

AFD Software of West Kilbride, Scotland, have a new version of their addressing package.

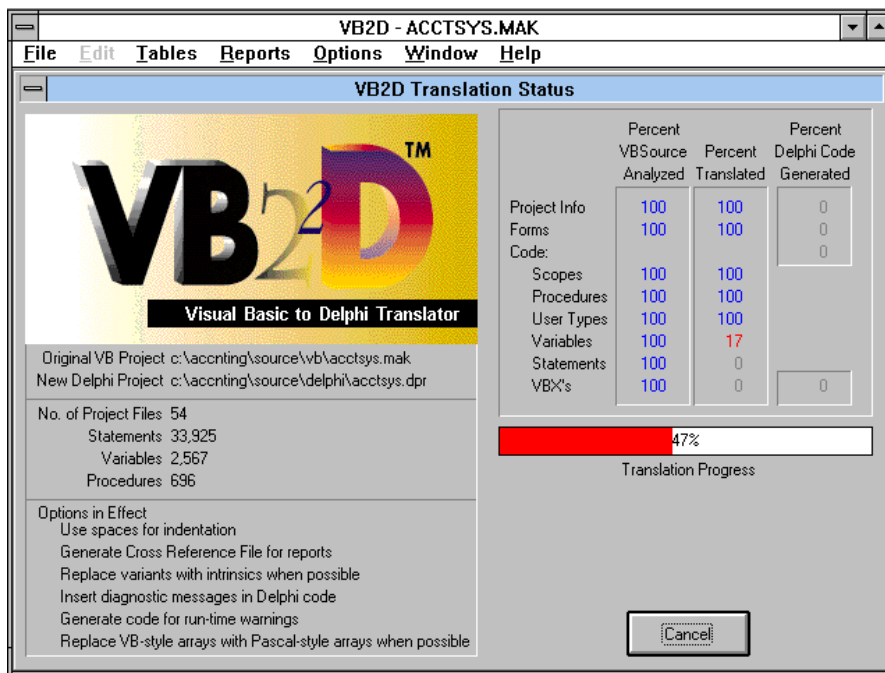
Suitable for both software developers and end-users, the new version includes extra data such as mailsort codes, NHS and electoral ward codes. As well as providing near-complete addresses from UK postcodes, PostCode Plus will also supply a postcode given even part of an address.

A complete Delphi example is included (see the screenshot, right), which is easily amended for inclusion in your own projects.

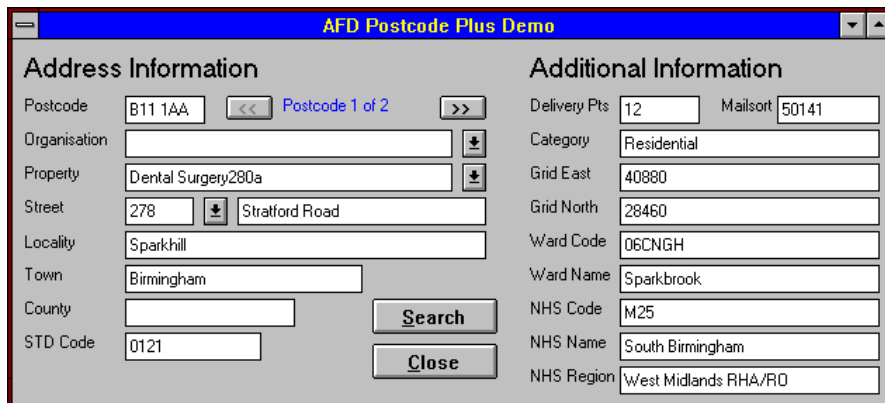
For a demo version (including the Delphi code) dial AFD's BBS on +44 (0) 1294 829327. Contact AFD on +44 (0) 1294 823221, Fax: +44 (0) 1294 822904, or send Email to: [Postcode@afd.co.uk](mailto:Postcode@afd.co.uk)

### Interface Enhancement

New from Kinetic Software is KSTranForm, a non-visual component which provides some of the advanced features seen in the latest shrink-wrapped Windows apps:



➤ VB2D Visual Basic to Delphi Translator from Eagle Research



➤ This is the sample Delphi application which is included with AFD's new postCode Plus package – comprehensive data or what!

roll-up forms (as first seen in Corel's applications), tiny captions, custom buttons in the window frame, bitmaps in window captions, frame styles and more. For further details download the demo from CompuServe's DELPHI forum (library 22), send Email to 102065.563@compuserve.com or visit <http://www.esper.com/kinetic>

### Information Please!

If you have products or services relevant to Delphi developers we want to hear about them! Send your information to us at the address on page 54 (or by fax or email), marked for the attention of the Editor.